



1st shut down and
LOTO CHW
P-3, and P-4



2nd Close and
LOTO these valves



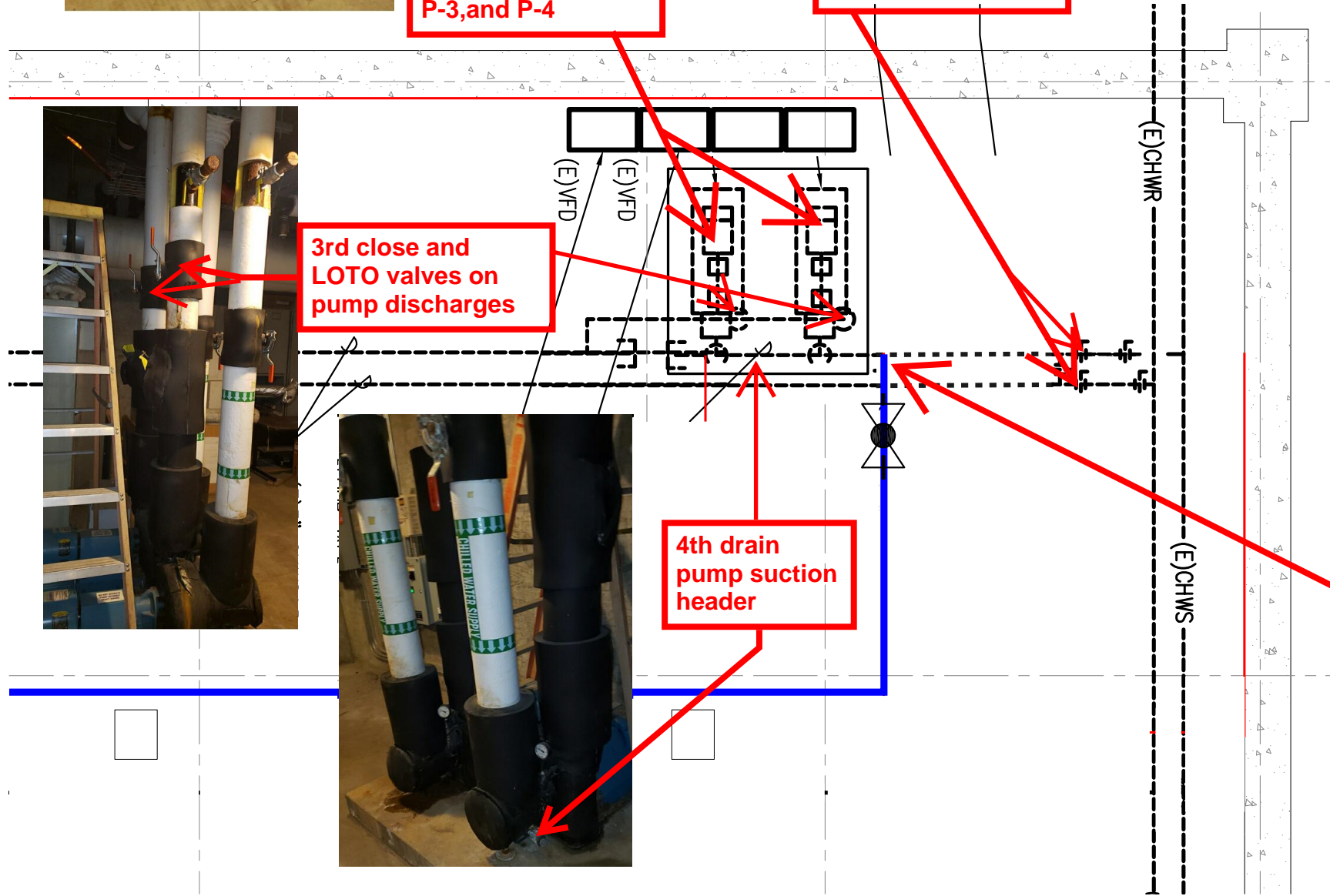
3rd close and
LOTO valves on
pump discharges

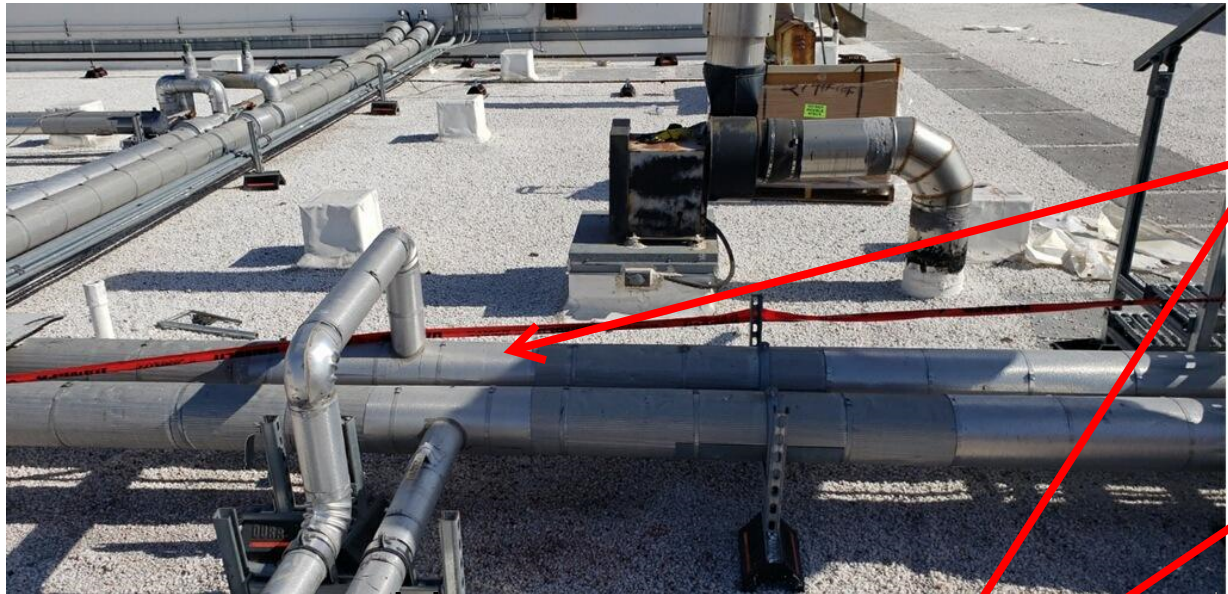


4th drain
pump suction
header



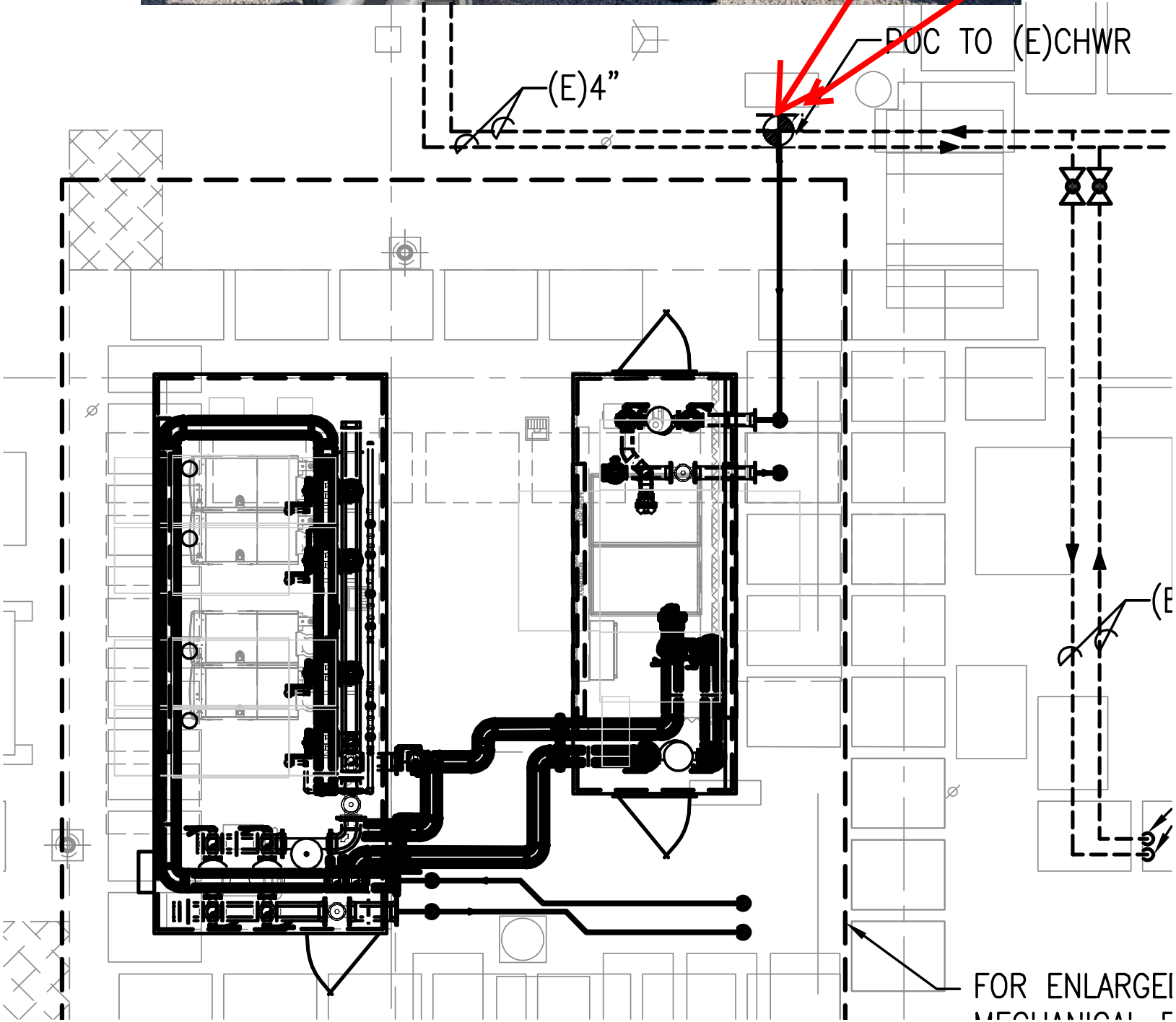
5th Re-place 90
with tee and
connect new
piping to POC





We will have a 4" Weld-O-Let and flange welded to the top of the CHWR pipe and tested before the Outage

6th Cut Cookie out of saddle and bolt on valve and blind



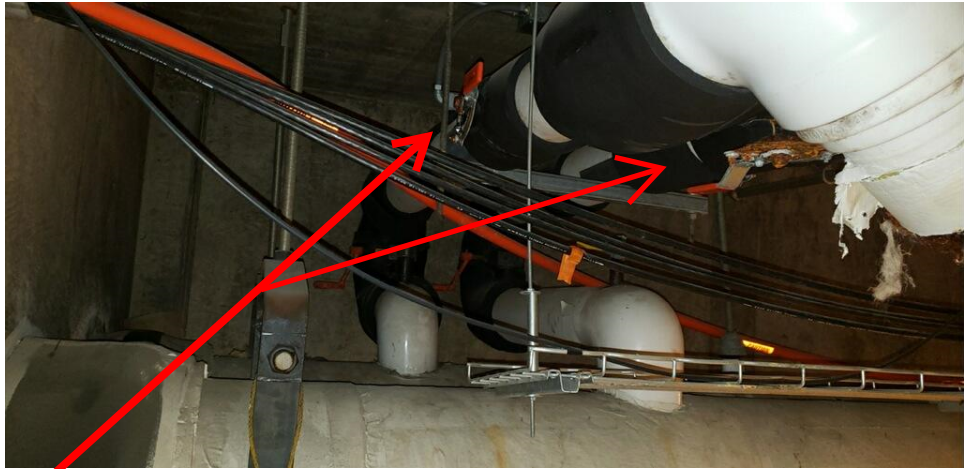
7th Re-route these two 2" CHW lines around new support piers on roof



12th Put pumps back on auto



9th Open valves on discharge of pumps



11th Open valves off CHWS&R Mains

10th vent air out on roof



8th Re- fill CHW Piping

